

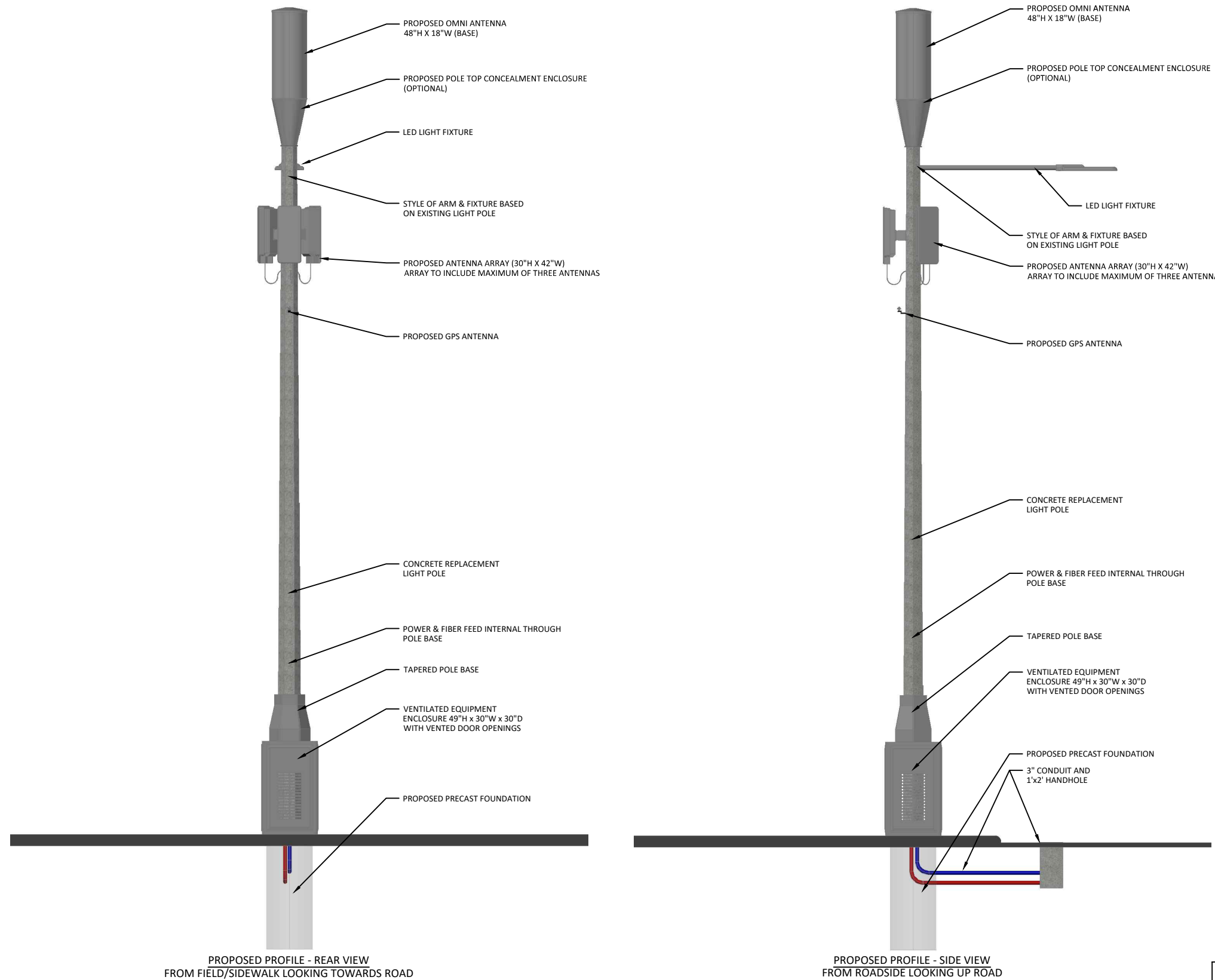
EXHIBIT X-1A

SCHEDULE OF APPROVED WIRELESS FACILITIES

<p>Facility Number</p>	<p>X-1A - Standard Concrete Light Pole with RRH Concealment / Aeriata, Cobra, Shoebox, Double Cobra, Curved, Double Curved, Straight, Double Straight</p>
<p>Attachment Types <i>(check all that apply and provide detail below)</i></p>	<p><input checked="" type="checkbox"/> Replacement City Pole (streetlight)</p> <p><input checked="" type="checkbox"/> Replacement City Property Pole (streetlight)</p> <p><input checked="" type="checkbox"/> Attach to existing City Pole (streetlight)</p> <p><input checked="" type="checkbox"/> Attach to existing City Property Pole (streetlight)</p> <p><input type="checkbox"/> Attach to existing City Pole (traffic signal)</p> <p><input type="checkbox"/> Attach to existing City Property Pole (traffic signal)</p> <p><input type="checkbox"/> Attach to existing City Pole (street furniture)</p> <p><input type="checkbox"/> Attach to existing City Property Pole (street furniture)</p> <p><input type="checkbox"/> Attach to Non-City Pole</p>
<p>Attachment Type Detail</p>	<p>Standard Concrete Replacement Light Pole with RRH</p>
<p>Physical Description</p>	<p>Antenna array (no more than 42" diameter and no more than 30" height) of up to three antennas mounted to exterior of pole above and below the light fixture with a previously approved X-1 antenna or as a stand-alone system. Remote radio head(s), power, and fiber equipment will be concealed and ventilated within a stealth, expanded, base (not to exceed 49"H x 30"W x 30"D) The base will be painted to match the steel replacement pole and antenna equipment. GPS Antenna to be installed on the pole (not to exceed 4"H x 3"W).</p>
<p>Concealment</p>	<p>The pole top antenna and related cabling will be contained within a concealed structure as detailed above. Cabling will be routed within the replacement pole structure and will connect to the equipment housed within the pole mounted enclosure. The antenna, pole, and equipment enclosure will be painted to match. The replacement luminaire</p>

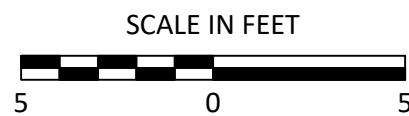
	will be installed at the same height as the existing pole to conform to the local streetscape.
Included Documents	<p>The following documents:</p> <ul style="list-style-type: none"> A. Replacement Pole Profile including fixture type, equipment specifications, and foundation and ground connection details. B. Photo mock-up showing existing and proposed pole views.
RF Compliance Information	<p><input checked="" type="checkbox"/> Facility conforms to information already on file <input checked="" type="checkbox"/> RF information attached</p> <p>Crown Castle will attach FCC signage appropriate to the installed equipment.</p>
Comments	

STANDARD CONCRETE REPLACEMENT LIGHT POLE WITH BASE CABINET, ANTENNA ARRAY AND POLE TOP ANTENNA



- NOTES:**
- ALL DISTANCES, DIMENSIONS, LOCATIONS, EQUIPMENT DESIGNATIONS AND SPECIFICATIONS ARE APPROXIMATE.
 - ALL MATERIAL, COLOR & STYLE WILL MATCH CURRENTLY EXISTING MATERIALS AND WHERE NEEDED ANY RF FRIENDLY MATERIAL WILL BE PAINTED TO MATCH.
 - IT IS ASSUMED THAT ALL PROPOSED UTILITIES WILL BE ROUTED BELOW GRADE TO THE PROPOSED INSTALLATION.
 - THE PURPOSE OF THE DESIGN IS TO SHOW A CONCEPTUAL DESIGN FOR THE REPLACEMENT/MODIFICATIONS OF EXISTING LIGHT POLE. THEREFORE, THESE DESIGNS ARE INHERENTLY APPROXIMATE IN NATURE AND SHOULD NOT BE USED AS AN EXACT, SCALED ENGINEERING DRAWING.
 - POLE REPLACEMENT SPECIFICATIONS AND DIMENSIONS, INCLUDING STRUCTURAL FOUNDATIONS, WILL VARY BASED ON REQUIRED ANTENNA HEIGHTS REQUESTED BY CROWN CASTLE.
 - EQUIPMENT ENCLOSURE TO BE NO LARGER THAN (49"Hx30"Wx30"D).
 - GPS ANTENNA TO BE NO LARGER THAN 4"Hx3"W.
 - OMNI ANTENNA TO BE NO LARGER THAN 18"Øx48"H.
 - EACH ANTENNA ARRAY TO BE NO LARGER THAN 30"Hx42"W.
 - POLE REPLACEMENT INFORMATION FOR ALL STANDARD LIGHT POLES:
 - 14' EXISTING POLE TO BE REPLACED WITH NEW POLE AND A MAX HEIGHT OF 20'
 - 19' EXISTING POLE TO BE REPLACED WITH NEW POLE AND A MAX HEIGHT OF 25'
 - 24' EXISTING POLE TO BE REPLACED WITH NEW POLE AND A MAX HEIGHT OF 28.8'
 - 29' EXISTING POLE TO BE REPLACED WITH NEW POLE AND A MAX HEIGHT OF 34.8'
 - CROWN CASTLE WILL PLACE SMALL PLACARD ON POLE IDENTIFYING OWNERSHIP/CONTACT INFORMATION.
 - LED LIGHT & LUMINAIRE ARM STYLE WILL MATCH EXISTING & WILL BE AT SAME HEIGHT AS SHOWN IN PHOTOSIMS.
 - PROPOSED LIGHTING WILL CONFORM TO THE CITY OF BOSTON'S LIGHTING STANDARDS.
 - PROPOSED INSTALLATION WILL BE PERFORMED IN ACCORDANCE WITH APPLICABLE SAFETY CODES, MAINTAINING APPROPRIATE CLEARANCES FROM EXISTING UTILITIES.
 - PROPOSED INSTALLATION WILL BE PERFORMED IN ACCORDANCE WITH THE APPLICABLE STRUCTURAL ENGINEERING DESIGN STANDARDS. ANY ADDITIONS OR MODIFICATIONS TO THE EXISTING INSTALLATION WILL INCLUDE MODIFICATIONS TO ENSURE THE STRUCTURE IS SOUND AND COMPLIANT WITH CURRENT APPLICABLE STANDARDS.
 - ORNAMENTAL & DECORATIVE FEATURES & LUMINAIRES WILL MATCH THE EXISTING FIXTURE UNLESS THE EXISTING FIXTURE IS A METAL HALIDE OR HIGH PRESSURE SODIUM FIXTURE. IN THESE SCENARIOS, THE FIXTURE WILL BE UPGRADED TO A CITY OF BOSTON APPROVED LED FIXTURE.

REVISIONS		
REV	DESCRIPTION	DATE



PREPARED BY: 21 OXFORD RD MANSFIELD, MA 02048 www.ucseeng.com 1-508-337-7600	TITLE: EXHIBIT X-20D PROPOSED BOSTON, MA	
	POLE INFO: STANDARD CONCRETE POLE	
PREPARED FOR: 	SURVEYED BY: UCS	PRINT NO: 1 OF 5
	DRAWN BY: AW	SCALE: AS SHOWN
	ISSUE DATE: 04/16/19	AS BUILT:

STANDARD CONCRETE REPLACEMENT LIGHT POLE WITH BASE
CABINET, ANTENNA ARRAY AND POLE TOP ANTENNA
(COBRA)





EXISTING PHOTOGRAPHIC VIEW



PROPOSED PHOTOGRAPHIC SIMULATION

04/23/2019 N:\Engineering\Crown Castle\EXHIBIT EXAMPLES FOR CITY OF BOSTON\AA - AUTOCAD\EXHIBIT X-20D.dwg

REVISIONS		
REV	DESCRIPTION	DATE

PREPARED BY:  21 OXFORD RD MANSFIELD, MA 02048 www.ucseng.com 1-508-337-7600		TITLE: EXHIBIT X-20D PROPOSED BOSTON, MA	
PREPARED FOR: 		POLE INFO: STANDARD CONCRETE POLE	
SURVEYED BY: UCS		PRINT NO: 2 OF 5	
DRAWN BY: AW		SCALE: AS SHOWN	
ISSUE DATE: 04/16/19		AS BUILT:	

**STANDARD CONCRETE REPLACEMENT LIGHT POLE WITH BASE
CABINET, ANTENNA ARRAY AND POLE TOP ANTENNA
(SHOE BOX)**





EXISTING PHOTOGRAPHIC VIEW



PROPOSED PHOTOGRAPHIC SIMULATION

04/23/2019 N:\Engineering\Crown Castle\EXHIBIT EXAMPLES FOR CITY OF BOSTON\AA - AUTOCAD\EXHIBIT X-20D.dwg

REVISIONS		
REV	DESCRIPTION	DATE

PREPARED BY:  Innovative Thinking. Engineered Solutions. 21 OXFORD RD MANSFIELD, MA 02048 www.ucseng.com 1-508-337-7600		TITLE: EXHIBIT X-20D PROPOSED BOSTON, MA	
PREPARED FOR: 		POLE INFO: STANDARD CONCRETE POLE	
SURVEYED BY: UCS		PRINT NO: 3 OF 5	
DRAWN BY: AW		SCALE: AS SHOWN	
ISSUE DATE: 04/16/19		AS BUILT:	

**STANDARD CONCRETE REPLACEMENT LIGHT POLE WITH BASE
CABINET, ANTENNA ARRAY AND POLE TOP ANTENNA
(DOUBLE COBRA)**





EXISTING PHOTOGRAPHIC VIEW



PROPOSED PHOTOGRAPHIC SIMULATION

04/23/2019 N:\Engineering\Crown Castle\EXHIBIT EXAMPLES FOR CITY OF BOSTON\AA - AUTOCAD\EXHIBIT X-20D.dwg

REVISIONS		
REV	DESCRIPTION	DATE

PREPARED BY:  Innovative Thinking. Engineered Solutions. 21 OXFORD RD MANFIELD, MA 02048 www.ucseeng.com 1-508-337-7600		TITLE: EXHIBIT X-20D PROPOSED BOSTON, MA	
PREPARED FOR: 		POLE INFO: STANDARD CONCRETE POLE	
SURVEYED BY: UCS		PRINT NO: 4 OF 5	
DRAWN BY: AW		SCALE: AS SHOWN	
ISSUE DATE: 04/16/19		AS BUILT:	

**STANDARD CONCRETE REPLACEMENT LIGHT POLE WITH BASE
CABINET, ANTENNA ARRAY AND POLE TOP ANTENNA
(TRIPLE COBRA)**





EXISTING PHOTOGRAPHIC VIEW



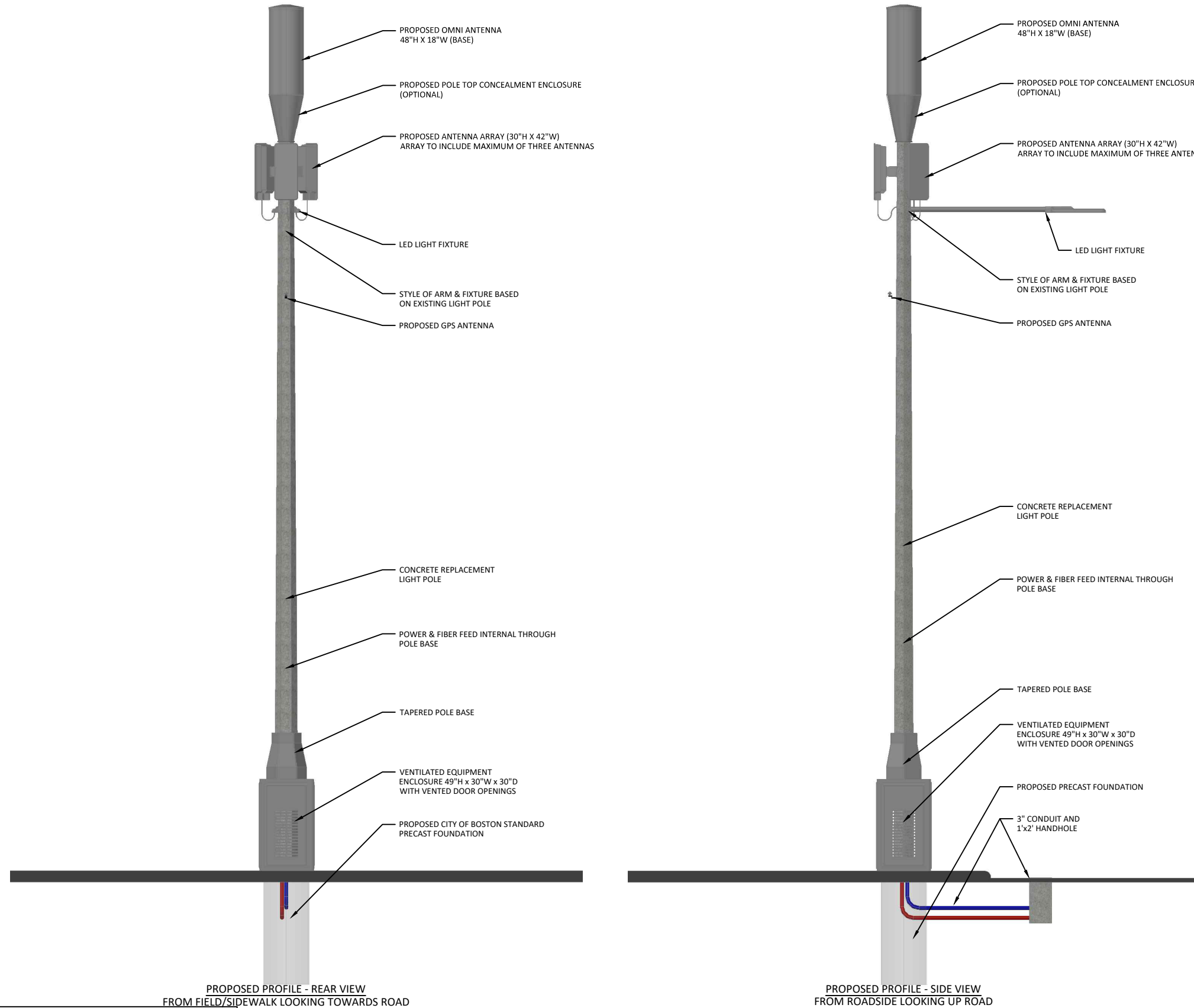
PROPOSED PHOTOGRAPHIC SIMULATION

04/23/2019 N:\Engineering\Crown Castle\EXHIBIT EXAMPLES FOR CITY OF BOSTON\AA - AUTOCAD\EXHIBIT X-20D.dwg

REVISIONS		
REV	DESCRIPTION	DATE

PREPARED BY:  Innovative Thinking. Engineered Solutions. 21 OXFORD RD MANSFIELD, MA 02048 www.ucseeng.com 1-508-337-7600		TITLE: EXHIBIT X-20D PROPOSED BOSTON, MA	
PREPARED FOR: 		POLE INFO: STANDARD CONCRETE POLE	
SURVEYED BY: UCS		PRINT NO: 5 OF 5	
DRAWN BY: AW		SCALE: AS SHOWN	
ISSUE DATE: 04/16/19		AS BUILT:	

STANDARD CONCRETE REPLACEMENT LIGHT POLE WITH BASE CABINET, ANTENNA ARRAY AND POLE TOP ANTENNA

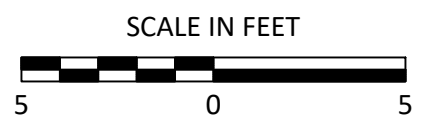


- NOTES:**
- ALL DISTANCES, DIMENSIONS, LOCATIONS, EQUIPMENT DESIGNATIONS AND SPECIFICATIONS ARE APPROXIMATE.
 - ALL MATERIAL, COLOR & STYLE WILL MATCH CURRENTLY EXISTING MATERIALS AND WHERE NEEDED ANY RF FRIENDLY MATERIAL WILL BE PAINTED TO MATCH.
 - IT IS ASSUMED THAT ALL PROPOSED UTILITIES WILL BE ROUTED BELOW GRADE TO THE PROPOSED INSTALLATION.
 - THE PURPOSE OF THE DESIGN IS TO SHOW A CONCEPTUAL DESIGN FOR THE REPLACEMENT/MODIFICATIONS OF EXISTING LIGHT POLE. THEREFORE, THESE DESIGNS ARE INHERENTLY APPROXIMATE IN NATURE AND SHOULD NOT BE USED AS AN EXACT, SCALED ENGINEERING DRAWING.
 - POLE REPLACEMENT SPECIFICATIONS AND DIMENSIONS, INCLUDING STRUCTURAL FOUNDATIONS, WILL VARY BASED ON REQUIRED ANTENNA HEIGHTS REQUESTED BY CROWN CASTLE.
 - EQUIPMENT ENCLOSURE TO BE NO LARGER THAN (49"Hx30"Wx30"D).
 - GPS ANTENNA TO BE NO LARGER THAN 4"Hx3"W.
 - OMNI ANTENNA TO BE NO LARGER THAN 18"Øx48"H.
 - EACH ANTENNA ARRAY TO BE NO LARGER THAN 30"Hx42"W.
 - POLE REPLACEMENT INFORMATION FOR ALL STANDARD LIGHT POLES:
 - 14' EXISTING POLE TO BE REPLACED WITH NEW POLE AND A MAX HEIGHT OF 20'
 - 19' EXISTING POLE TO BE REPLACED WITH NEW POLE AND A MAX HEIGHT OF 25'
 - 24' EXISTING POLE TO BE REPLACED WITH NEW POLE AND A MAX HEIGHT OF 28.8'
 - 29' EXISTING POLE TO BE REPLACED WITH NEW POLE AND A MAX HEIGHT OF 34.8'
 - CROWN CASTLE WILL PLACE SMALL PLACARD ON POLE IDENTIFYING OWNERSHIP/CONTACT INFORMATION.
 - LED LIGHT & LUMINAIRE ARM STYLE WILL MATCH EXISTING & WILL BE AT SAME HEIGHT AS SHOWN IN PHOTOSIMS.
 - PROPOSED LIGHTING WILL CONFORM TO THE CITY OF BOSTON'S LIGHTING STANDARDS.
 - PROPOSED INSTALLATION WILL BE PERFORMED IN ACCORDANCE WITH APPLICABLE SAFETY CODES, MAINTAINING APPROPRIATE CLEARANCES FROM EXISTING UTILITIES.
 - PROPOSED INSTALLATION WILL BE PERFORMED IN ACCORDANCE WITH THE APPLICABLE STRUCTURAL ENGINEERING DESIGN STANDARDS. ANY ADDITIONS OR MODIFICATIONS TO THE EXISTING INSTALLATION WILL INCLUDE MODIFICATIONS TO ENSURE THE STRUCTURE IS SOUND AND COMPLIANT WITH CURRENT APPLICABLE STANDARDS.
 - ORNAMENTAL & DECORATIVE FEATURES & LUMINAIRES WILL MATCH THE EXISTING FIXTURE UNLESS THE EXISTING FIXTURE IS A METAL HALIDE OR HIGH PRESSURE SODIUM FIXTURE. IN THESE SCENARIOS, THE FIXTURE WILL BE UPGRADED TO A CITY OF BOSTON APPROVED LED FIXTURE.

PROPOSED PROFILE - REAR VIEW
FROM FIELD/SIDEWALK LOOKING TOWARDS ROAD

PROPOSED PROFILE - SIDE VIEW
FROM ROADSIDE LOOKING UP ROAD

REVISIONS		
REV	DESCRIPTION	DATE



PREPARED BY: 21 OXFORD RD MANSFIELD, MA 02048 www.ucseeng.com 1-508-337-7600	TITLE: EXHIBIT X-20A PROPOSED BOSTON, MA
PREPARED FOR: 	POLE INFO: STANDARD CONCRETE POLE
SURVEYED BY: UCS	PRINT NO: 1 OF 5
DRAWN BY: NB	SCALE: AS SHOWN
ISSUE DATE: 01/16/19	AS BUILT:

STANDARD CONCRETE REPLACEMENT LIGHT POLE WITH BASE
CABINET, ANTENNA ARRAY AND POLE TOP ANTENNA
(COBRA)





EXISTING PHOTOGRAPHIC VIEW



PROPOSED PHOTOGRAPHIC SIMULATION

04/29/2019 N:\Engineering\Crown Castle\EXHIBIT EXAMPLES FOR CITY OF BOSTON\AA - AUTOCAD\EXHIBIT X-20A.dwg

REVISIONS		
REV	DESCRIPTION	DATE

PREPARED BY:  Innovative Thinking. Engineered Solutions. 21 OXFORD RD MANSFIELD, MA 02048 www.ucseng.com 1-508-337-7600	TITLE: EXHIBIT X-20A PROPOSED BOSTON, MA
PREPARED FOR: 	POLE INFO: STANDARD CONCRETE POLE
SURVEYED BY: UCS	PRINT NO: 2 OF 5
DRAWN BY: NB	SCALE: AS SHOWN
ISSUE DATE: 01/16/19	AS BUILT:

STANDARD CONCRETE REPLACEMENT LIGHT POLE WITH BASE
CABINET, ANTENNA ARRAY AND POLE TOP ANTENNA
(SHOE BOX)





EXISTING PHOTOGRAPHIC VIEW



PROPOSED PHOTOGRAPHIC SIMULATION

04/29/2019 N:\Engineering\Crown Castle\EXHIBIT EXAMPLES FOR CITY OF BOSTON\AA - AUTOCAD\EXHIBIT X-20A.dwg

REVISIONS		
REV	DESCRIPTION	DATE

PREPARED BY:  Innovative Thinking. Engineered Solutions. 21 OXFORD RD MANSFIELD, MA 02048 www.ucseng.com 1-508-337-7600	TITLE: EXHIBIT X-20A PROPOSED BOSTON, MA
PREPARED FOR: 	POLE INFO: STANDARD CONCRETE POLE
SURVEYED BY: UCS	PRINT NO: 3 OF 5
DRAWN BY: NB	SCALE: AS SHOWN
ISSUE DATE: 01/16/19	AS BUILT:

**STANDARD CONCRETE REPLACEMENT LIGHT POLE WITH BASE
CABINET, ANTENNA ARRAY AND POLE TOP ANTENNA
(DOUBLE COBRA)**





EXISTING PHOTOGRAPHIC VIEW



PROPOSED PHOTOGRAPHIC SIMULATION

04/29/2019 N:\Engineering\Crown Castle\EXHIBIT EXAMPLES FOR CITY OF BOSTON\AA - AUTOCAD\EXHIBIT X-20A.dwg

REVISIONS		
REV	DESCRIPTION	DATE

PREPARED BY:  Innovative Thinking. Engineered Solutions. 21 OXFORD RD MANFIELD, MA 02048 www.ucseeng.com 1-508-337-7600		TITLE: EXHIBIT X-20A PROPOSED BOSTON, MA	
PREPARED FOR: 		POLE INFO: STANDARD CONCRETE POLE	
SURVEYED BY: UCS		PRINT NO: 4 OF 5	
DRAWN BY: NB		SCALE: AS SHOWN	
ISSUE DATE: 01/16/19		AS BUILT:	

**STANDARD CONCRETE REPLACEMENT LIGHT POLE WITH BASE
CABINET, ANTENNA ARRAY AND POLE TOP ANTENNA
(TRIPLE COBRA)**





EXISTING PHOTOGRAPHIC VIEW



PROPOSED PHOTOGRAPHIC SIMULATION

04/29/2019 N:\Engineering\Crown Castle\EXHIBIT EXAMPLES FOR CITY OF BOSTON\AA - AUTOCAD\EXHIBIT X-20A.dwg

REVISIONS		
REV	DESCRIPTION	DATE

PREPARED BY:  Innovative Thinking. Engineered Solutions. 21 OXFORD RD MANSFIELD, MA 02048 www.ucseeng.com 1-508-337-7600	TITLE: EXHIBIT X-20A PROPOSED BOSTON, MA
PREPARED FOR: 	POLE INFO: STANDARD CONCRETE POLE
SURVEYED BY: UCS	PRINT NO: 5 OF 5
DRAWN BY: NB	SCALE: AS SHOWN
ISSUE DATE: 01/16/19	AS BUILT: